

DEFENCE ADHESIVE



EN 13984

SELF-ADHESIVE PROTECTIVE MEMBRANE FOR BUILDING ELEMENTS

EXTREMELY TRANSPARENT

The product, once applied, is invisible and allows both the markings of the powder tracer on the panel and the mounting holes to be easily seen.

The membrane protects the timber without interfering with either handling or site operations.

WATERPROOF AND NON-SLIP

The surface treatment makes the product waterproof. On site, the membrane resists abrasion and trampling.

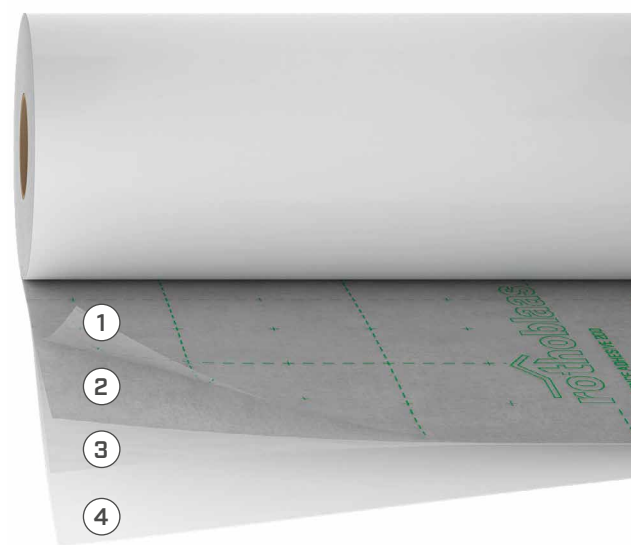
12-WEEK GUARANTEED PROTECTION

With the self-adhesive surface of the membrane, installation is quick and easy. The protection of building elements is guaranteed for 12 weeks, and if an error is made during installation, the membrane can be easily repositioned and reapplied within the first few minutes.



COMPOSITION

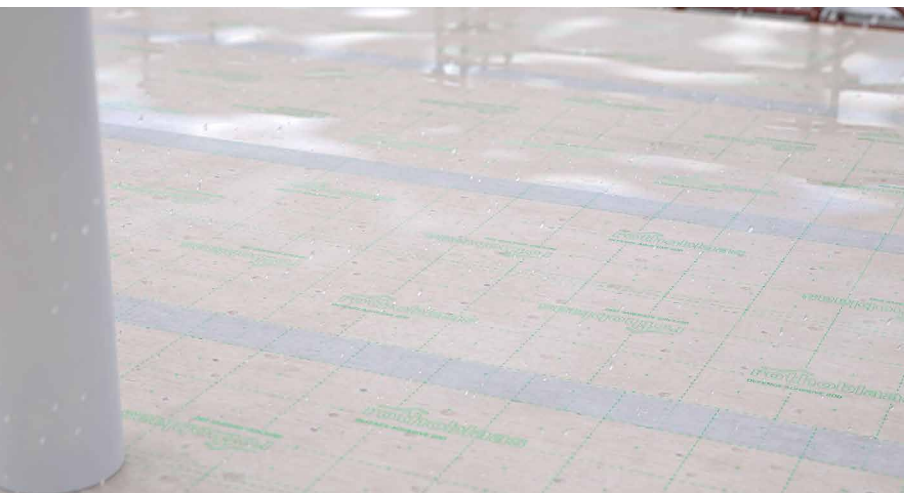
- 1 top layer: EVA coating
- 2 bottom layer: non-woven PP fabric
- 3 glue: acrylic dispersion without solvents
- 4 separation layer: pre-cut removable plastic film



CODES AND DIMENSIONS

CODE	description	liner [mm]	H [m]	L [m]	A [m ²]	H [ft]	L [ft]	A [ft ²]	
DEFA200	DEFENCE ADHESIVE 1,55 m	150/1300	1,55	50	77,5	5' 1	164	834	50
DEFAS200	DEFENCE ADHESIVE STRIPE 0,385 m	192,5/192,5	0,385	50	19,25	1' 3 1/8	164	207	88
DEFA200490	DEFENCE ADHESIVE 50 cm	245/245	0,49	50	24,5	1' 7 1/4	164	264	30
DEFA200990	DEFENCE ADHESIVE 1 m	495/495	0,99	50	49,5	3' 3	164	533	16

Available in different widths on request.



WATERPROOF, VAPOUR PERMEABLE

The special polymer treatment makes the membrane impermeable to water and air, but with good vapour permeability.

TECHNICAL DATA

Properties	standard	value	USC units
Mass per unit area	EN 1849-2	220 g/m ²	0.72 oz/ft ²
Thickness	EN 1849-2	0,3 mm	12 mil
Water vapour transmission (Sd)	EN 1931	2,5 m	1.4 perm
Tensile strength MD/CD	EN 12311-1	> 120/80 N/50 mm	> 14/9 lbf/in
Elongation MD/CD	EN 12311-1	> 40/40 %	-
Resistance to nail tearing MD/CD	EN 12310-1	> 60/65 N	> 14/15 lbf
Watertightness	EN 1928	compliant	-
Resistance to penetration of air	EN 12114	< 0,02 m ³ /(m ² h50Pa)	< 0.001 cfm/ft ² at 50Pa
Reaction to fire	EN 13501-1	class E	-
Fire resistance rating on plain CLT joint (120 mm) 3 mm joint(*)	EN 1363-4	EI 90	-
Resistance to temperature	-	-40/+80 °C	-40/176 °F
Flexibility at low temperatures	EN 1109	- 40°C	-40 °F
UV stability	EN 13859-1/2	336h (3 months)	
Exposure to weather ⁽¹⁾	-	12 weeks	-
Density	-	approx. 740 kg/m ³	46 lbm/ft ³
Water vapour resistance factor (μ)	-	approx. 10000	approx. 12.5 MNs/g
Adhesion strength on OSB at 90° after 10 min	EN 29862	2 N/10 mm	1.1 lbf/in
Adhesion strength on OSB at 180° after 10 min	EN 29862	2 N/10 mm	1.1 lbf/in
Adhesion strength (average) on DEFENCE ADHESIVE after 24h	EN 12316-2	13 N/50 mm	1.5 lbf/in
Shear adhesion strength of the joint on DEFENCE ADHESIVE after 24h ⁽²⁾	EN 12317-2	95 N/50 mm	10.8 lbf/in
Storage temperature ⁽³⁾	-	-5/+35 °C	23/95 °F
Application temperature	-	+5/+25 °C	41/77 °F
Solvents	-	no	

⁽¹⁾For use as temporary protection of construction elements, not as a long-term functional layer.

⁽²⁾Minimum required value according to DTU 31.2 P1-2 (France): 40 N/50 mm.


⁽³⁾Store the product in a cool, dry place for no more than 12 months.

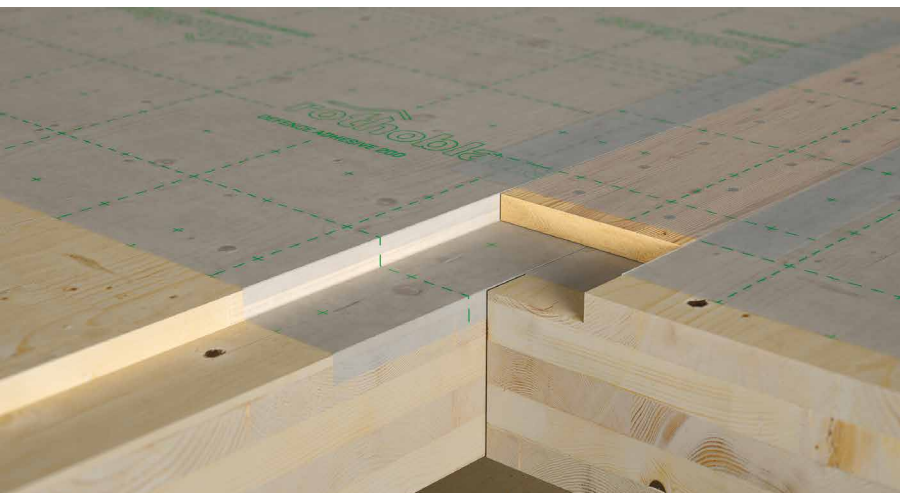
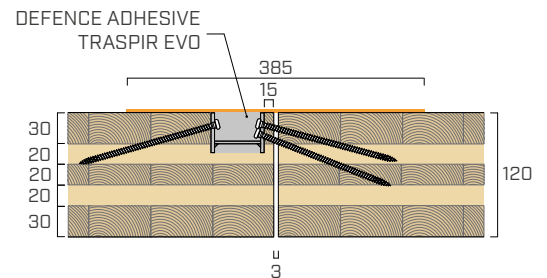
^(*)For full details and tested configurations, please refer to the manual or contact our technical department.

♻️ Waste classification (2014/955/EU): 08 04 10.

FIRE TIGHTNESS AND INSULATION

Tests carried out at the CSI laboratory in accordance with EN 1363-4 enabled characterisation of the fire behaviour of several CLT joints sealed with Rothoblaas products.

TIGHTNESS (E)	Cotton swab	> 96 minutes	
	Persistent flame		
INSULATION (I)	Time	> 96 minutes	EI 90



PREFABRICATION

Ideal product for prefabrication: installation on the panel is improved and protection of the building element during transport and assembly is maximized. Highly flexible and repositionable within the first few minutes, the membrane ensures sealing of complex surfaces.