

## TIMBER-TO-CONCRETE JOINT SYSTEM

### HYBRID STRUCTURES

The VGS, VGZ and RTR full-thread connectors are now certified for any type of application where a timber element (wall, ceiling, etc.) must transmit stresses to a concrete element (bracing core, foundation, etc.).

### PREFABRICATION

The concrete prefabrication combines with timber prefabrication: the reinforcing bars inserted into the concrete casting accommodate the full thread timber connectors; the supplementary casting carried out after installing the timber components completes the connection.

### POST-AND-SLAB SYSTEMS

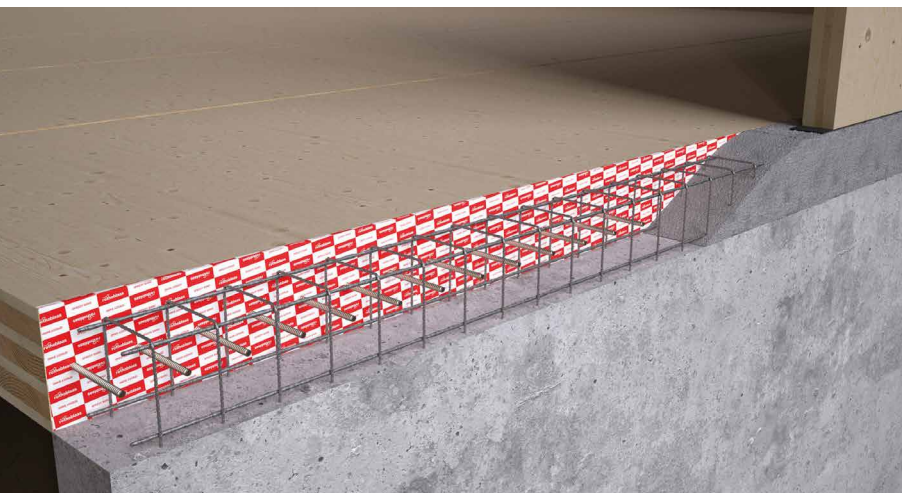
It allows connections between CLT panels with exceptional strength and stiffness for shear, bending moment and axial stress: an example is its use with SPIDER and PILLAR.



VGS



RTR



### FIELDS OF USE

Timber-to-concrete joints:

- CLT, LVL
- glulam and solid timber
- concrete according to EN 206-1





## SPIDER AND PILLAR

TC FUSION complements the SPIDER and PILLAR systems, allowing the implementation of moment connections between panels. Rothoblaas waterproofing systems make it possible to separate timber and concrete.