

THERMOWASHER

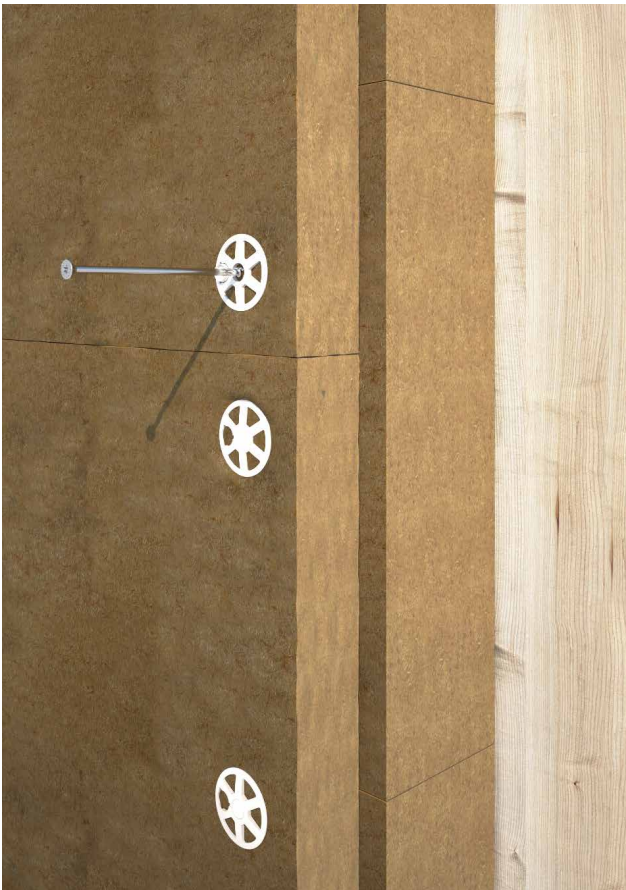
WASHER TO FASTEN INSULATION TO TIMBER

CE FASTENING WITH HBS SCREWS

The thermowasher is intended for use with screws with the CE marking in accordance with ETA. Ideal for Ø0.24 inch or Ø0.32 inch HBS screws, with lengths based on the thickness of the insulation to be fastened.

ANTI-THERMAL BRIDGE

Incorporated hole cover to avoid thermal bridges. Large cable spaces for proper plaster adhesion. Has a system that prevents the screw from pulling out.



EXPOSURE CONDITION



MATERIAL



Propylene (PP) system

CODES AND DIMENSIONS

CODE	d _{SCREW}		d _{HEAD}		thickness		depth		pcs
	[mm]	[in]	[mm]	[in]	[mm]	[in]	[mm]	[in]	
THERMO65	6 - 8	0.24 - 0.32	65	2 9/16	4	0.16	20	0.79	700



FIELDS OF USE

The propylene washer with an external diameter of 2 9/16" is compatible with 0.24 inch and 0.32 inch screw diameters. Suitable for all types of insulation and all fixture thicknesses.