

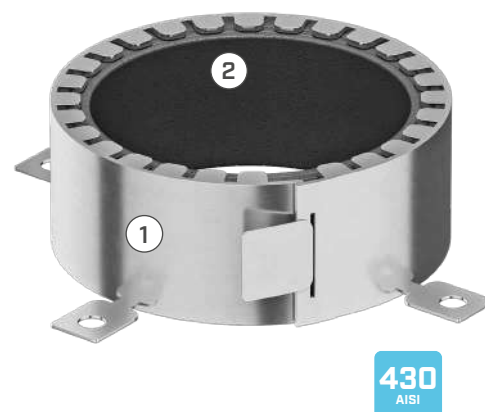
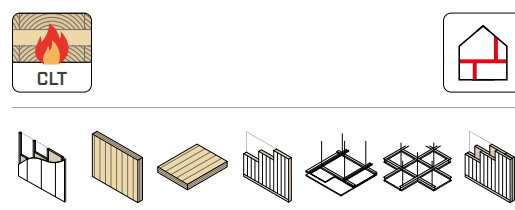
FIRESTOP COLLAR FOR MECHANICAL AND ELECTRICAL TECHNICAL PENETRATIONS

FAST

It can be applied to penetrations of specific types and diameters. Quick and easy installation.

VERSATILE PROTECTION

The outer stainless steel structure allows its application in wet environments, and the highly expansive intumescent strip ensures protection for large-sized elements.

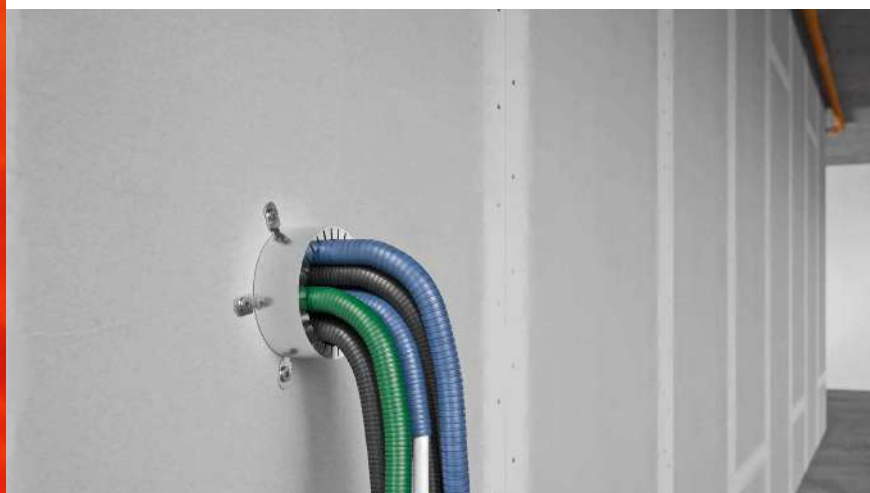


COMPOSITION

- ① AISI 430 stainless steel (1.4016)
- ② highly expansive "Firefill" intumescent material

CODES AND DIMENSIONS

CODE	internal diameter [mm]	height [mm]	fastening points [no.]	internal diameter [mm]	height [mm]	
COLLUM30	30	50	4	1 3/16	2	60
COLLUM63	63	50	4	2 1/2	2	20
COLLUM80	80	50	4	3 1/8	2	16
COLLUM90	90	50	4	3 1/2	2	16
COLLUM100	100	50	4	4	2	8
COLLUM110	110	50	4	4 3/8	2	8
COLLUM125	125	70	4	4 15/16	2 3/4	4
COLLUM140	140	70	4	5 1/2	2 3/4	3
COLLUM160	160	70	4	6 1/4	2 3/4	3
COLLUM315	315	200	4	12 3/8	8	1



VERSATILE

Ideal for defined diameters. Easy to apply in new and existing installations.

REUSEABLE

Easily removed and reused.

TECHNICAL DATA











Properties	value	USC units
Free expansion	> 20:1	-
Activation temperature	180 °C	356 °F
Fire resistance rating on CLT wall/floor ⁽¹⁾	EI120	-

⁽¹⁾EN 1366-3 standard. For full details and tested configurations, please refer to the manual or contact our technical department for updates on new tests. The product remains stable when stored under normal conditions.

♻️ Waste classification (2014/955/EU): 19 10 01 (foil) | 07 02 13 (sheath).

FIELDS OF APPLICATION

PLUMBING

	combustible	insulated combustible	insulated multilayer	steel insulated
flush wall pipes				
non-flush wall pipes		-	-	-
flush floor pipes				
non-flush floor pipes		-	-	-

ELECTRICAL and TELECOMMUNICATIONS

	in-wall wiring	in-floor wiring
flush combustible pipes		